

WHAT IS CPHS1?

The Surveying & Spatial Sciences Institute (SSSI) is Australia's peak body representing the interests of surveying and spatial science professionals, combining the disciplines of land surveying, engineering and mining surveying, cartography, hydrography, remote sensing and spatial information science.

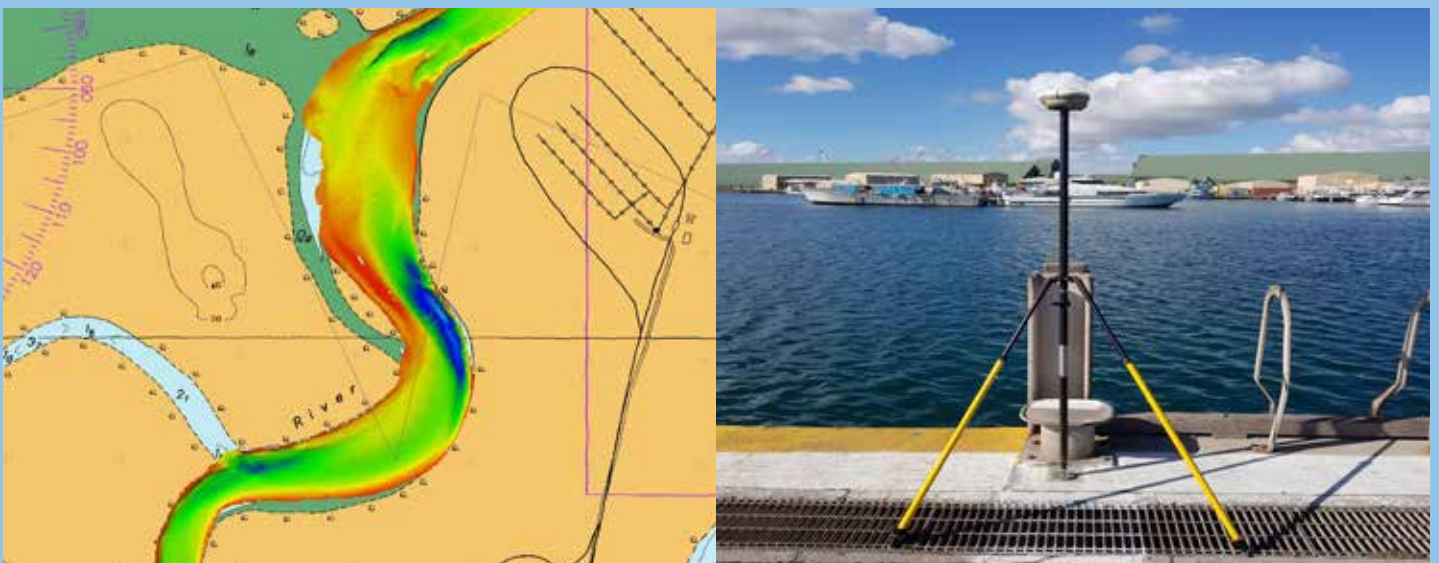
The Hydrographic Surveying industry, professional organisations and users of survey data, identified the need for a regulated supply of competent Hydrographic Surveyors, and in 1994, SSSI formed an accreditation panel. Today, it is known as the Australasian Hydrographic Surveyors Certification Panel (AHSCP) and remains chaired by the Hydrographer of Australia. It is the first internationally recognised certification scheme and the demand for certification as a requirement to conduct infrastructure projects is now high.

There are two levels of specialist certification in Hydrography – Level 1 (CPHS1) and Level 2 (CPHS2). CPHS1 is the highest attainable achievement for a Hydrographic Surveyor. Each is outlined in more detail here:

<https://sssi.org.au/get-certified/hydrographic-surveyor/certification-levels>

For a Hydrographic Surveyor, certification recognises experience, competence and integrity via a formal "portfolio-based" process. Certification represents the highest standards of professionalism; specialisation of skills and knowledge; currency of expertise; and leadership.

Hydrographic Surveying accuracies are dependent on many factors including the quality of the sounding installation, the quality of the personnel operating the equipment and their ability to adjust to varying conditions. PHS guarantee all projects are directed by a CPHS1, which provides complete competence in PHS experience and execution of projects.



P +61 (8) 7120 2211

E info@precisionhydrographic.com.au

W www.precisionhydrographic.com.au